



# ER65



in conjunction with

ER Yacht Design  
*in pursuit of perfection*









Built to a design by Ivan Erdevicki and his Vancouver-based studio, ER Yachts Design, this 65-metre superyacht will see completion in 2025, thus becoming RMK Marine's flagship. The ER65, as this project is provisionally identified, will boast ice and polar class requirements, hybrid propulsion, helipad with re-fueling station and a hangar for a deep-water submarine. This yacht will accommodate 12 guests and 20 crew on five decks.

























ER65

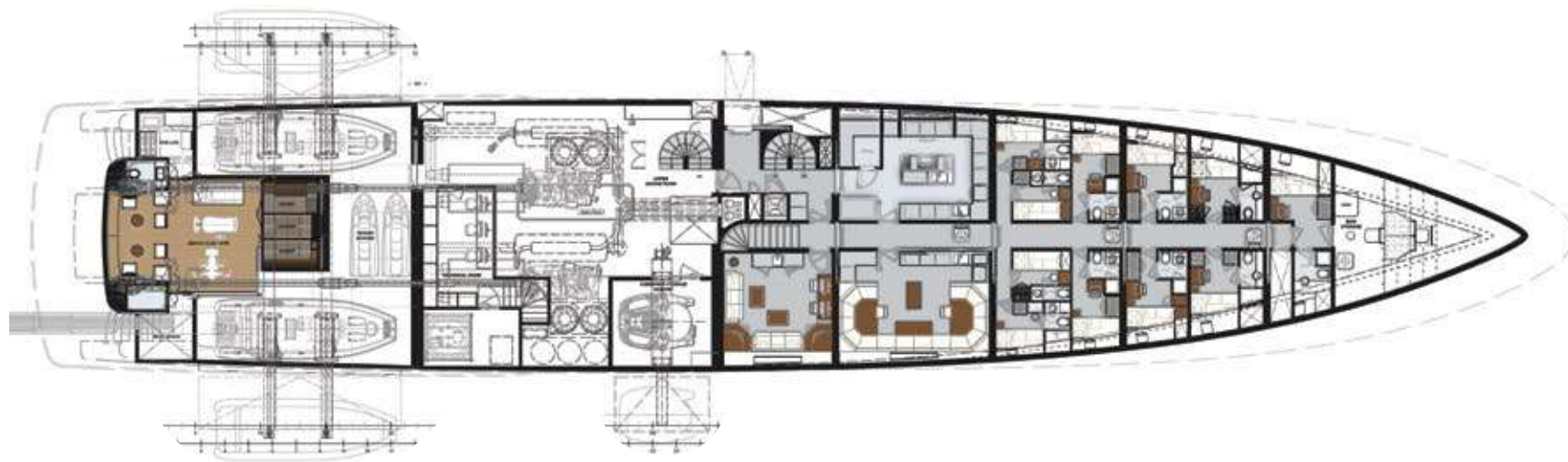




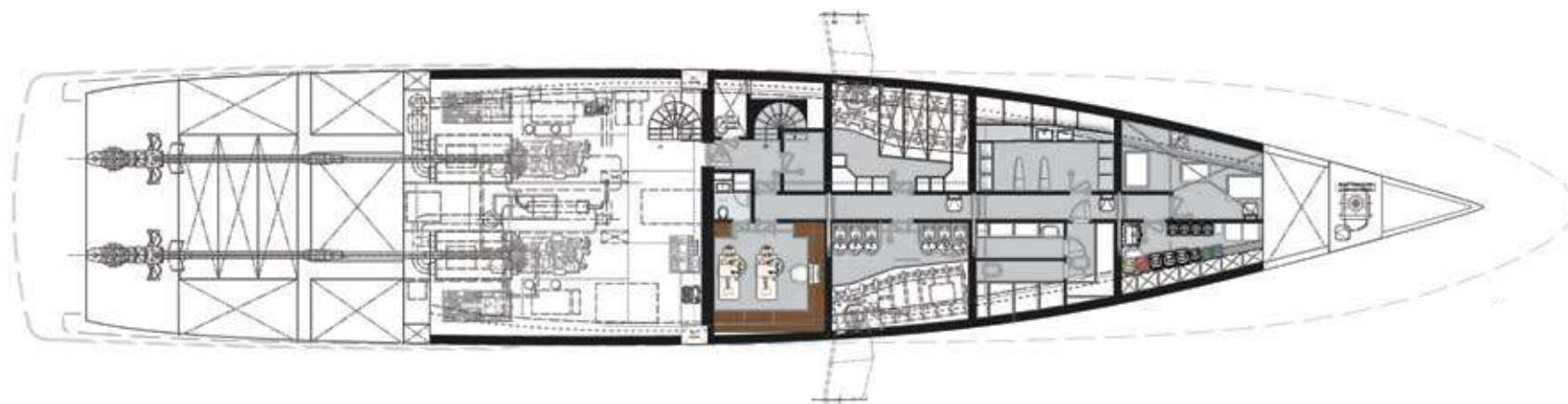




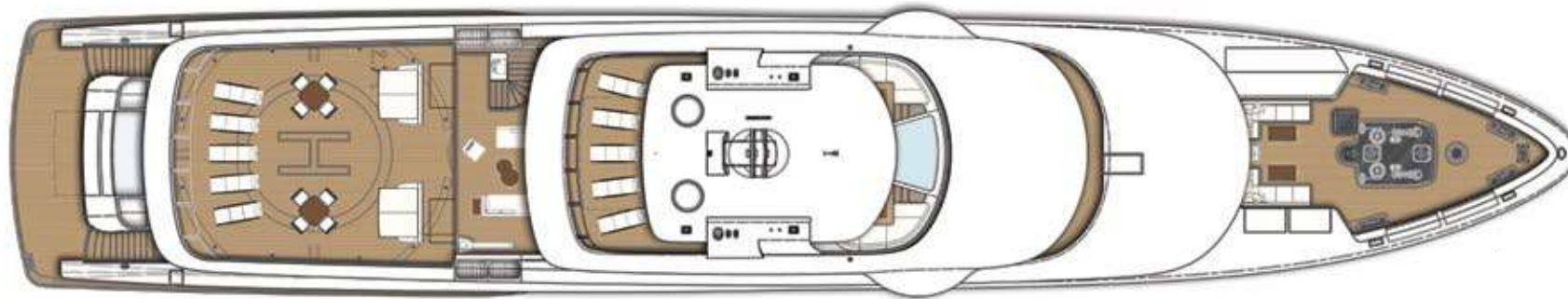
Main Deck



Lower Deck



Tank Deck



Deck Plan



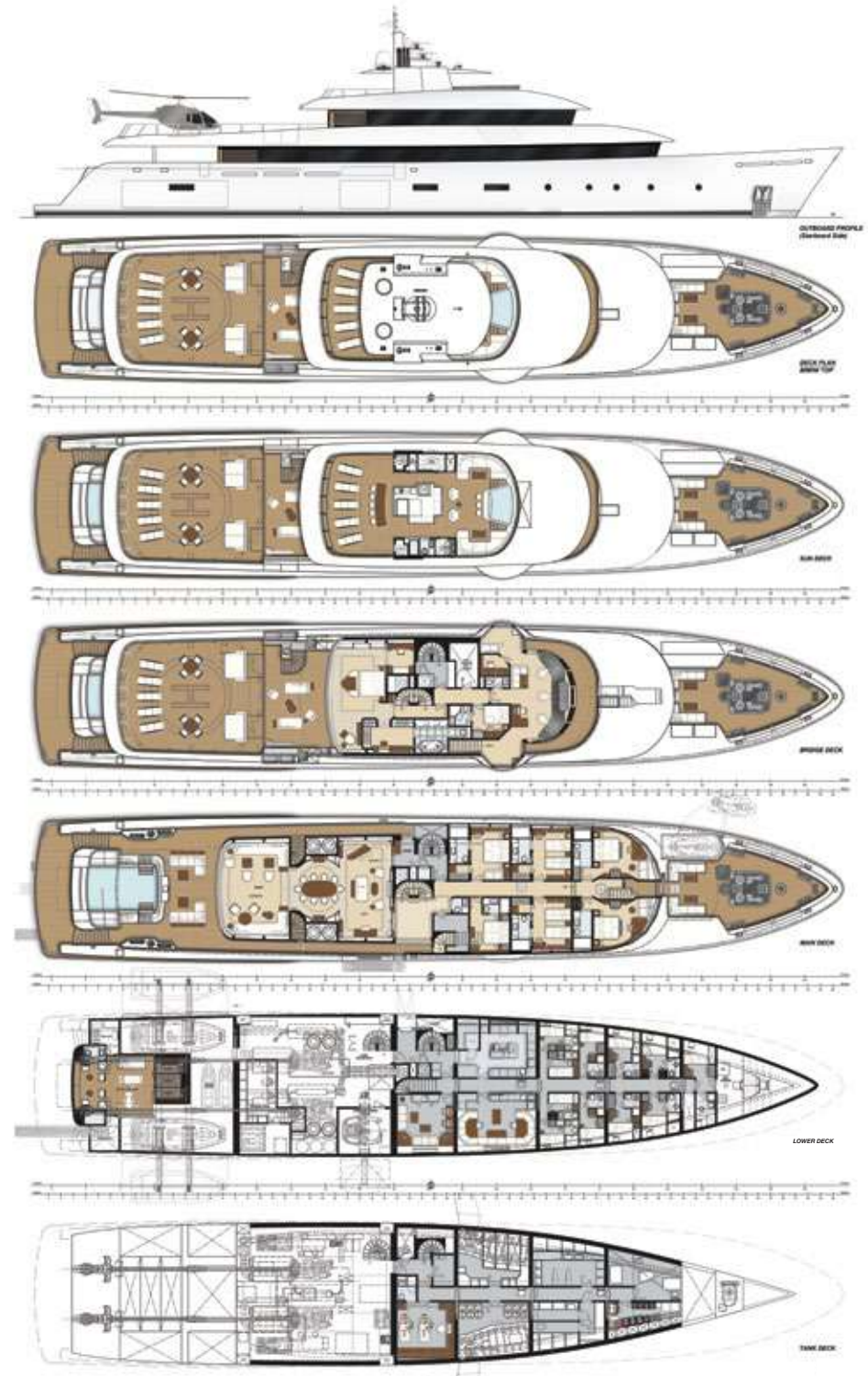
Sun Deck



Bridge Deck

## Main Particulars

Type	: Ice Class Expedition Motor Yacht
Exterior Design	: ER Yacht Design
Naval Architecture	: ER Yacht Design & RMK Marine
Interior Design	: ER Yacht Design
Builder	: RMK Marine
Class Notation	: Lloyd Register – IMO Polar Code – Category B – Ice Class PC 6
Hull Type / Material	: Steel
Superstructure Material	: Steel
Length Overall	: 65 m / 213 ft
Beam Moulded / Max	: 11.5 m / 11.85 m
Draught	: 4 m
Gross Tonnage	: 1410 GT
Main Engines	: MTU 12V4000M55R 2x1120 kW @ 1600 RPM
Gensets	: 2 x 500 kW, 1 x 250 kW, 1 x 88 kW
Speed (Cruise/max)	: 12.5 knots / 15 knots
Range @ 10 knots	: 6300 Nm
Number of Guest	: 12 guests / 7 cabins
Number of Crew	: 20 persons / 12 cabins
Fuel	: 170 m <sup>3</sup>
Fresh Water	: 42 m <sup>3</sup>
Waste Water	: 55 m <sup>3</sup>
Stabilizer	: Kongsberg – Aquarius 50
Cranes	: Hydromar
Gangway / Swimming Platform	: Besenzoni
Shore Power	: Atlas
Windlass / Capstan	: Data
Decks	: Burmese Teak
Paint System	: Jotun







RMK Marine Gemi Yapım Sanayii  
ve Deniz Taşımacılığı İşletmesi A.Ş.  
Evliya Çelebi Mahallesi Tersaneler Caddesi  
No:12 Tuzla 34944 İstanbul Turkey

Phone: +90 216 581 33 00

Fax: +90 216 395 45 82

[www.rmkmarine.com](http://www.rmkmarine.com)

